

Technical Datasheet

Product Code: **BAE893001**

Product Description: **Armitage Shanks Sandringham 21 350mm 2 Tap Hole Handrinse Washbasin**

Specification

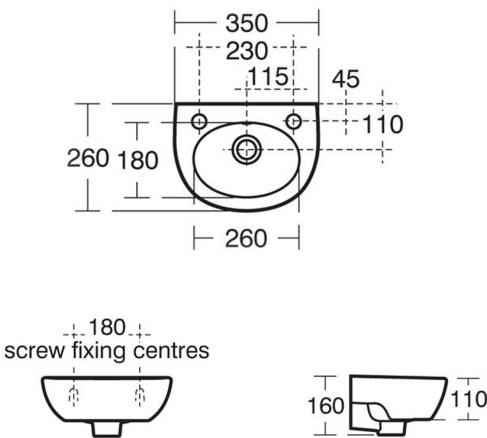
Product Guarantee:	Lifetime
Barcode:	5017830440932
Made In the UK:	Yes
Projection (mm):	260
Material:	Vitreous China
Style:	Modern
Shape:	Round
Number Of Tap Holes:	2



Key Features

- Wide-ranging bathroom ceramic collection with modern expressive design
- Manufactured from high quality white vitreous china
- Space saving design ideal for wall mounting
- Features 2 tap holes suitable for pillar taps use with chainstay
- Overflow included to prevent any bathroom accidents
- Alternatively available in 450mm with tap hole & chainstay options
- Matching sanitaryware are also available in the Sandringham 21 range

Technical Drawing



Dimensions: All measurements are in millimetres and are subject to normal manufacturing variations.

Due to a continuing development programme to improve design and performance, we reserve all rights to vary specifications without prior notice. Please note, all accessories are for photographic purposes only.