

Technical Datasheet

Product Code: **BAS0685LJ**

Product Description: **Armitage Shanks S0685LJ Con21+ DocM Back To Wall Pack Grey Rails LH**

Specification

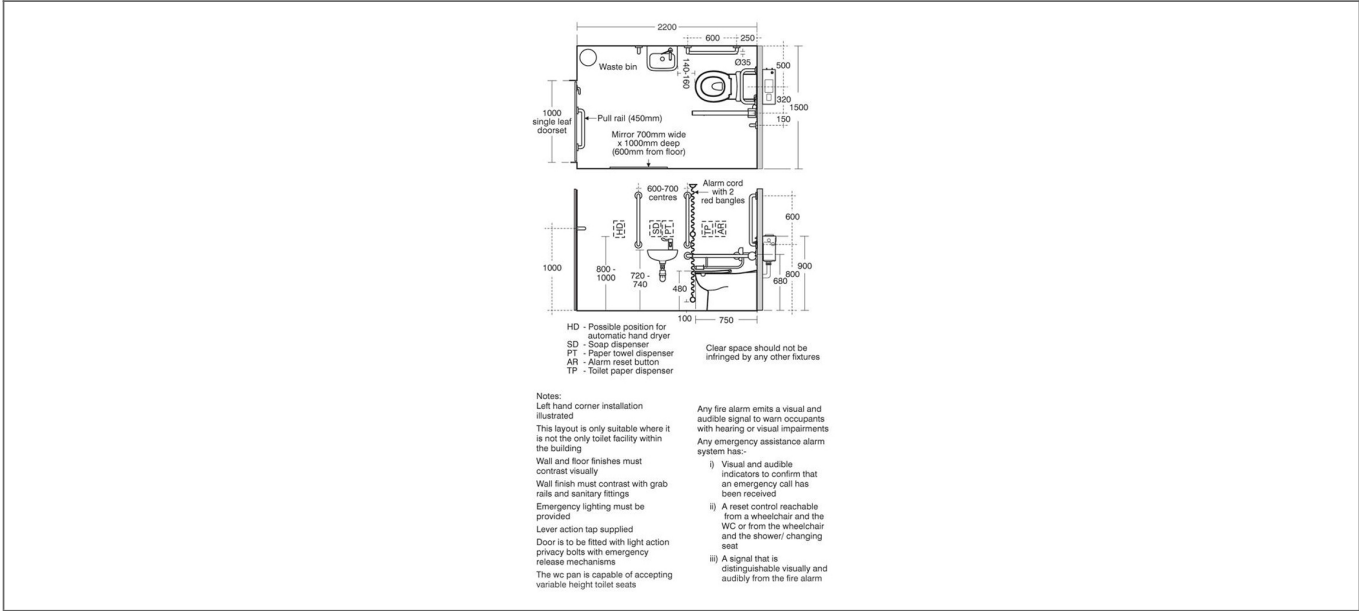
Material:	Ceramic & Metal
Style:	Modern
Range Name:	Contour 21
Colour:	Grey
Barcode:	5017830532644
Packaged Weight (kg):	69.659 kg
Packaged Length (Metre):	0.99
Packaged Width (Metre):	0.63
Packaged Height (Metre):	0.51



Key Features

- Hinged support rail with toilet roll holder
- TMV3 approved basin mixer to help prevent scalding
- Water saving delay fill cistern with spatula lever
- Rimless technology for a cleaner & more hygienic flush
- Comes complete with grey grab rails

Technical Drawing



Dimensions: All measurements are in millimetres and are subject to normal manufacturing variations.

Due to a continuing development programme to improve design and performance, we reserve all rights to vary specifications without prior notice. Please note, all accessories are for photographic purposes only.