

Technical Datasheet

Product Code: **CM108069000**

Product Description: **CARRARA & MATTA 108069000 Kent Sta-Tite**

Specification

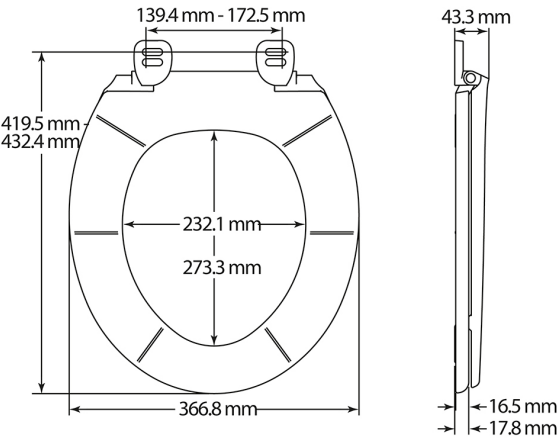
Material:	Duroplast
Seat Type:	Standard
Barcode:	8000367009137
Packaged Weight (kg):	1.0 kg



Key Features

- Your seat stays tight with STA-TITE® fixing system
- Durable polypropylene, perfect for high-traffic area
- Robust adjustable plastic hinges
- Universal fit

Technical Drawing



Dimensions: All measurements are in millimetres and are subject to normal manufacturing variations.

Due to a continuing development programme to improve design and performance, we reserve all rights to vary specifications without prior notice. Please note, all accessories are for photographic purposes only.