

Technical Datasheet

Product Code: 237DIRWH500GR

Product Description: Arley Direction 500mm 2 Door W/Hung Basin Unit



Specification

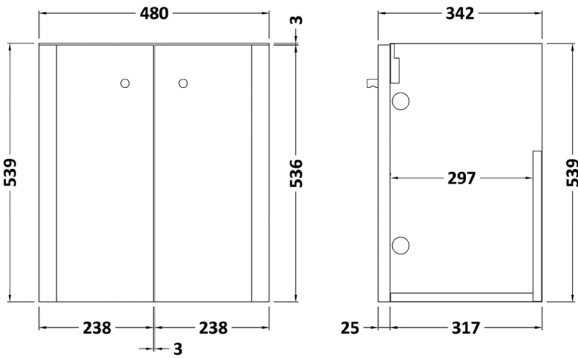
| | |
|--------------------------|---------------|
| Number Of Doors: | 2 |
| Number Of Shelves: | 1 |
| Handle Type: | Bar |
| Material: | MFC |
| Style: | Modern |
| Barcode: | 5056211883838 |
| Packaged Weight: | 16 kg |
| Packaged Length (Metre): | 0.34 |
| Packaged Width (Metre): | 0.5 |
| Packaged Height (Metre): | 0.56 |



Key Features

- Wide-ranging bathroom furniture collection with modern expressive design
- Manufactured from high quality materials
- Coated in a MFC & MDF gloss grey finish
- Features 2 soft close doors for a quiet & smooth open
- Compatible for installation with Direction basin range

Technical Drawing



Dimensions: All measurements are in millimetres and are subject to normal manufacturing variations.

Due to a continuing development programme to improve design and performance, we reserve all rights to vary specifications without prior notice. Please note, all accessories are for photographic purposes only.