

Technical Datasheet

Product Code: **SY-MARB15**



Product Description: **Synergy Marbella Maxi CC Full Access Open Back Pan**

Specification

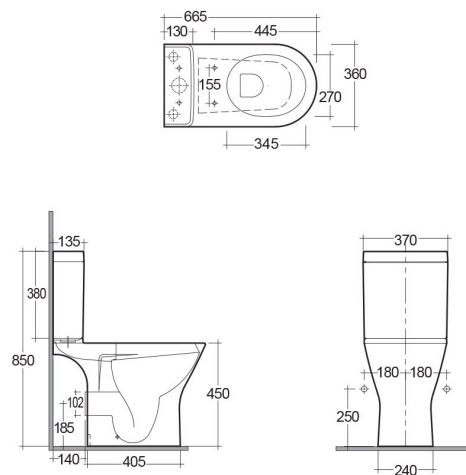
| | |
|-----------------------|----------------|
| Product Guarantee: | Lifetime |
| Barcode: | 5056474509780 |
| Packaged Weight (kg): | 32 kg |
| Material: | Vitreous China |
| Projection: | 665 |
| Style: | Modern |
| Includes Seat: | No |



Key Features

- Pure & luxurious modern design ideal to boost your bathroom décor
- Vitreous china's smooth, elegant, naturally stain resistant quality helps stand the test of time
- Rimless technology makes it easier to clean & reduces limescale build up
- Ideal for taller people or those with mobility issues
- Optional soft close seat is available from this range
- Matching sanitaryware are also available in the Marbella range

Technical Drawing



Dimensions: All measurements are in millimetres and are subject to normal manufacturing variations.

Due to a continuing development programme to improve design and performance, we reserve all rights to vary specifications without prior notice. Please note, all accessories are for photographic purposes only.