

Technical Datasheet

Product Code: **BEA7005AA**

Product Description: **I/Std A7005AA Contour 21+ Thermo Wall Bath Filler**

Specification

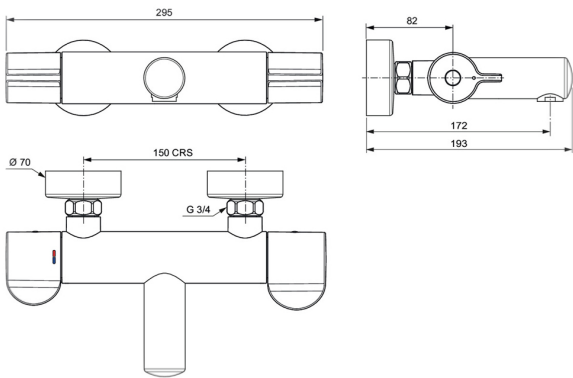
Product Guarantee:	5 Years
Material:	Brass
Handle Type:	Knob
Number Of Tap Holes:	2
Projection (mm):	172
Flow Rate 3 Bar (L/min):	20
Colour:	Chrome



Key Features

- Wide-ranging bathroom collection with modern expressive design
- Manufactured from high quality brass
- Coated in a luxury chrome finish
- Thermal cleanse feature
- Specifically designed for healthcare application to meet requirements of HTM 04 01

Technical Drawing



Dimensions: All measurements are in millimetres and are subject to normal manufacturing variations.

Due to a continuing development programme to improve design and performance, we reserve all rights to vary specifications without prior notice. Please note, all accessories are for photographic purposes only.